



Lansdowne, St Ives, TR26
Guide Price £240,000



Landsdowne is a handsome Victorian property in the sought after residential area of 'The Belyars' in St Ives. The fine restaurants, wonderful beaches and Tate St Ives are a stroll down the hill. Apartment 6 is on the ground floor with parking.



Key Features

- Ground Floor Apartment
- Entrance Via The Main House
- Private Entrance From The Garden
- Remainder Of A 999 Year Lease
- Allocated Parking Space For One
- Beautiful Communal Garden
- Sea Glimpses
- Dowhill Stroll To The Beaches
- Awaiting Service Charge
- Awaiting EPC









Apartment 6 is a ground floor apartment with an allocated parking space. It holds a 999-year lease from the 29th of September 1985. The ground rent is £25.00 per annum and the service charge is to be defined.

The accommodation comprises a living room, kitchen, bathroom and two double bedrooms.

From the entrance hall of the main house the front door to the apartment opens to the vestibule and the apartment's hallway, off which are the following rooms.

Living Room – Large bay window to the garden aspect, wall mounted electrical heater, decorative fireplace and access to a cellar storage space beneath.

Kitchen – Opaque double-glazed door and window to the garden aspect. The working kitchen area comprises a matching range of base and eye level units, single sink and drainer, plumbing for a washing machine and dryer and an electric hob and oven.

Bathroom – The matching suite comprises bath with an electric shower over, hand basin and WC.

Bedroom 1 – There is a double-glazed window to the garden aspect with a far reaching sea view and built in wardrobes.

Bedroom 2 - Double glazed window to the garden aspect.

Outside – There is an allocated parking space for one vehicle, visitors parking and a beautifully maintained communal tiered garden.

AGENTS NOTE: The apartment can be holiday let but only to the same guest for a period of 6 weeks at time.

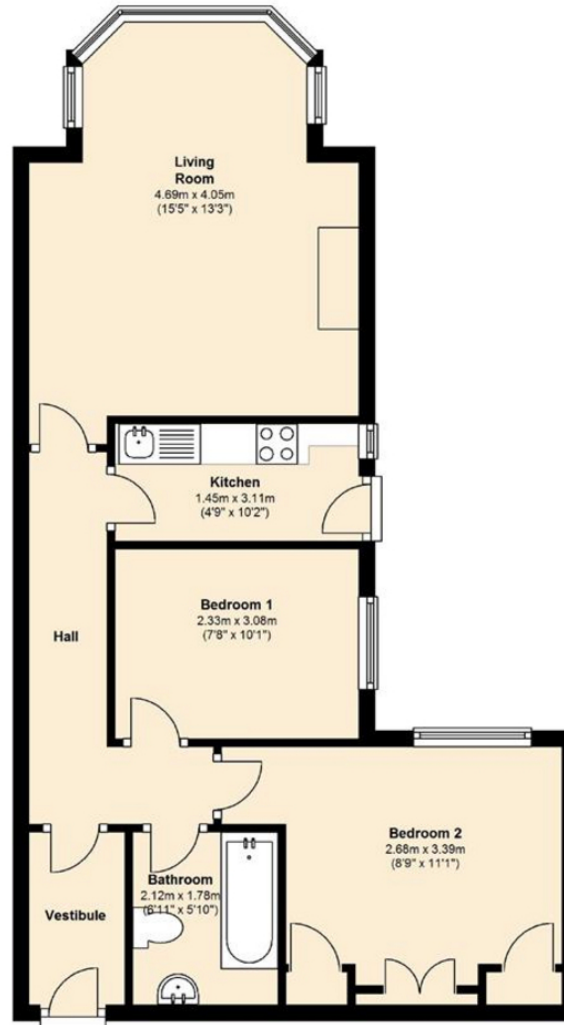
The apartment currently has a tenant in residence and 24 hours notice is required to view the property.







Ground Floor
Approx. 55.2 sq. metres (594.6 sq. feet)



Total area: approx. 55.2 sq. metres (594.6 sq. feet)

Tenure Type: Leasehold
Council Tax Band: TBC
Council Authority: Cornwall Council