



Isla-Alexander

First Floor, 36 Station Road, Cardiff - CF14 5LT

07817727321 • lynne@isla-alexander.com • www.isla-alexander.com



Bythams Minster Drive

Minster On Sea, Sheerness

Charming three-bedroom detached house with breath taking sea views. This family home features a perfect blend of comfort, practicality and cosy charm, providing a tranquil retreat for its residents.

Council Tax band: D

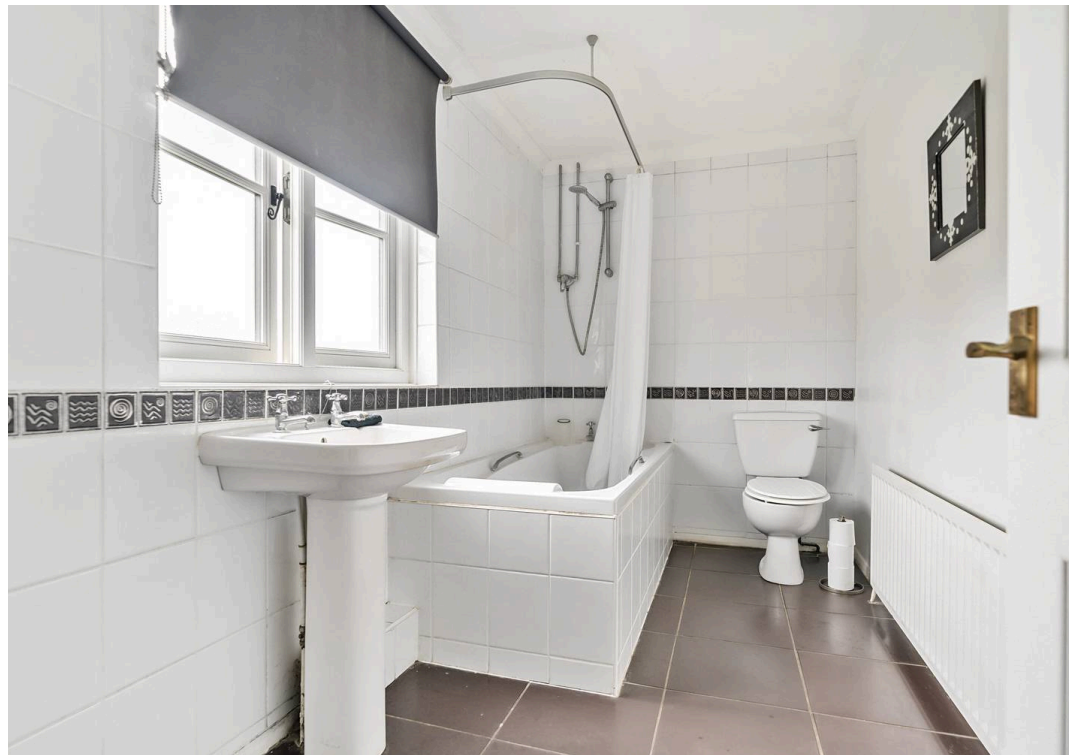
Tenure: Freehold

EPC Energy Efficiency Rating: D

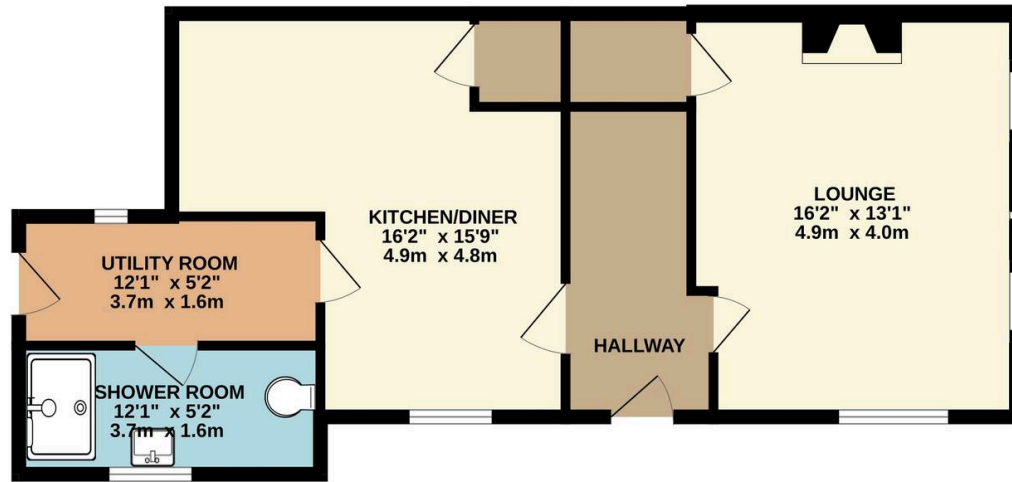
EPC Environmental Impact Rating: D

- Charming three bedroom detached home
- Prime location in Minster
- Family bathroom and ground floor shower room
- Light and spacious kitchen/diner
- Double aspect lounge with wood burner
- Corner plot with stunning sea views
- Walking distance to the beach
- Secluded garden and side patio
- Ample parking
- Handy and spacious utility/boot room

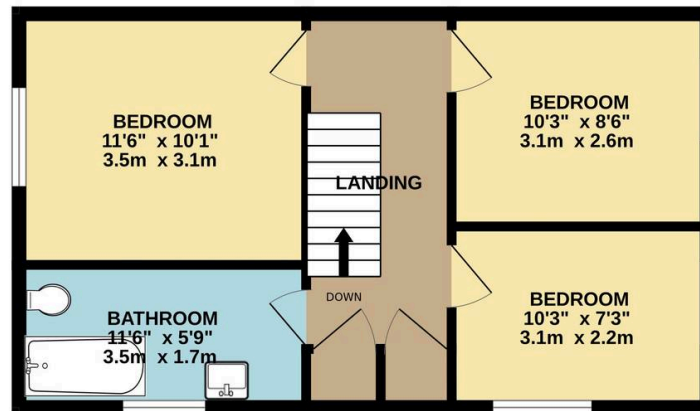




GROUND FLOOR
619 sq.ft. (57.5 sq.m.) approx.



1ST FLOOR
436 sq.ft. (40.5 sq.m.) approx.



TOTAL FLOOR AREA : 1055 sq.ft. (98.0 sq.m.) approx.

Whilst every attempt has been made to ensure the accuracy of the floorplan contained here, measurements of doors, windows, rooms and any other items are approximate and no responsibility is taken for any error, omission or mis-statement. This plan is for illustrative purposes only and should be used as such by any prospective purchaser. The services, systems and appliances shown have not been tested and no guarantee as to their operability or efficiency can be given.
Made with Metropix ©2024



Isla-Alexander

First Floor, 36 Station Road, Cardiff - CF14 5LT

07817727321

lynne@isla-alexander.com

www.isla-alexander.com