



Isla-Alexander

First Floor, 36 Station Road, Cardiff - CF14 5LT

07817727321 • lynne@isla-alexander.com • www.isla-alexander.com



2 Oak Tree Close

Eastchurch, Sheerness

PRICE GUIDE £850,000 - £900,000 Exceptional six bedroom detached home including a two bedroom self contained Annex located in prestigious Kingsborough Manor.

Council Tax band: F

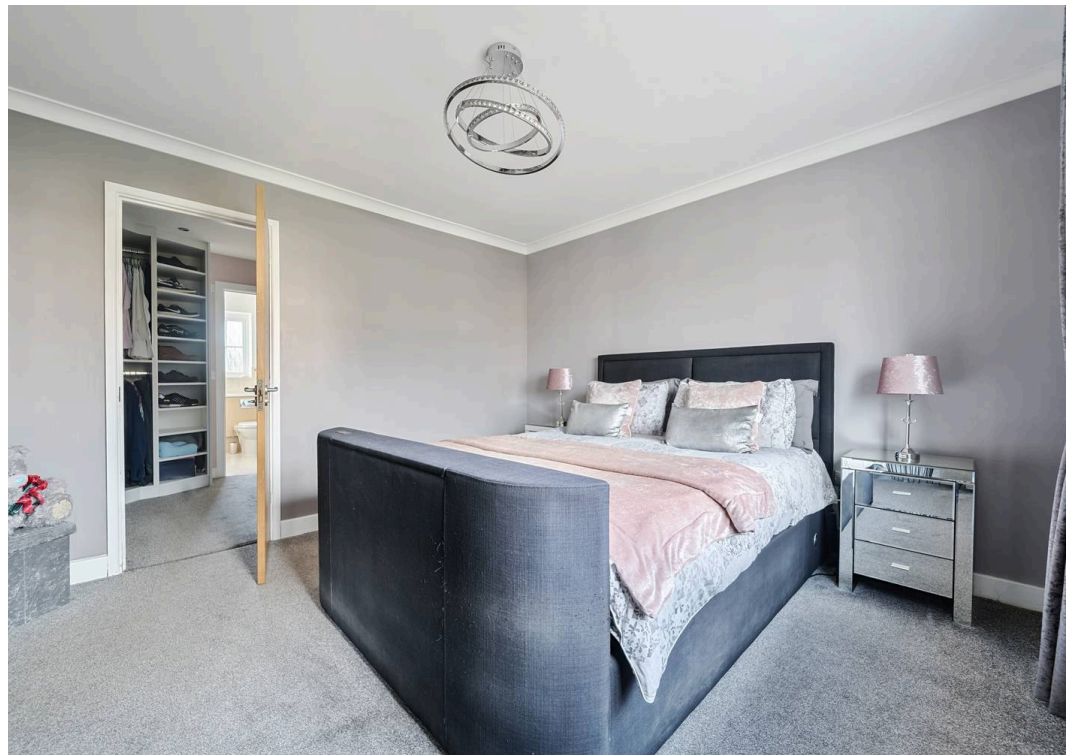
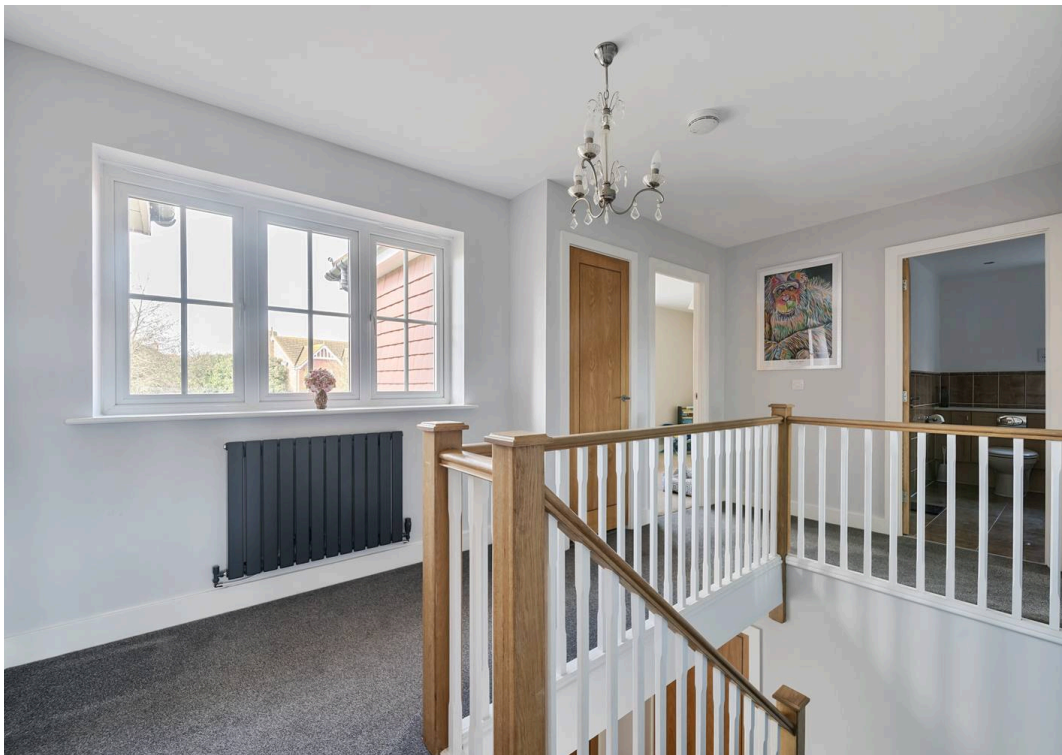
Tenure: Freehold

EPC Energy Efficiency Rating: C

EPC Environmental Impact Rating: C

- Prime location at Kingsborough Manor
- Extended four bedroom detached with added two bedroom self contained Annex
- 31 ft by 25 ft Kitchen/dining/family room
- Kitchen area with central island, fitted Neff appliances and raise and lower extractor
- Living space has wood burner bifold doors and velux windows with electric blinds
- Master bedroom with dressing room and ensuite
- Separate, lounge, study and garden room
- Spacious utility room with access to double garage with electric doors
- Self contained Annex with own entrance, hall, lounge/diner utility/cloakroom, two bedrooms and bathroom
- Impressive frontage with extensive parking, enclosed rear garden and substantial workshop. Approximately third of an acre plot

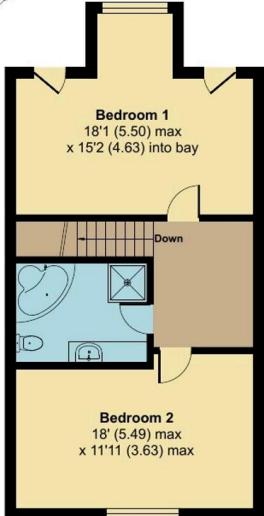




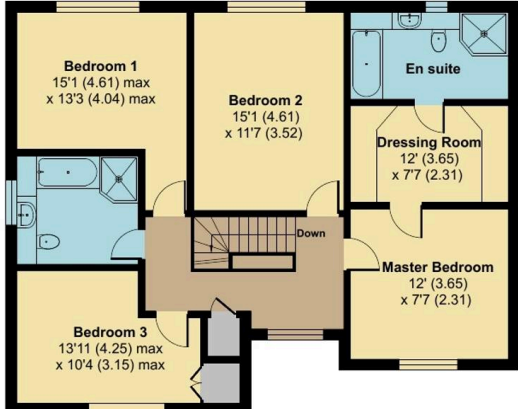
Oak Tree Close, Eastchurch, Sheerness, ME12



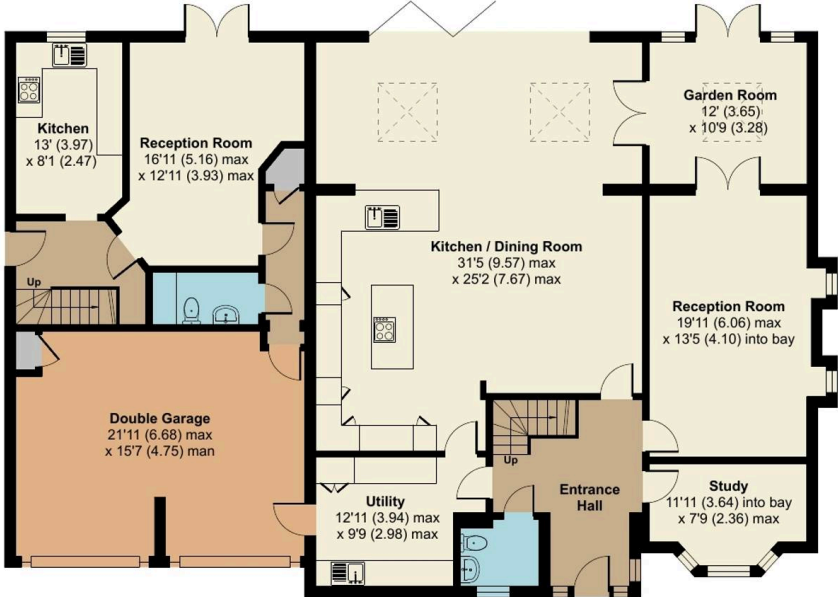
Approximate Area = 2543 sq ft / 236.2 sq m
 Garage = 369 sq ft / 34.2 sq m
 Annexe = 1089 sq ft / 101.1 sq m
 Total = 4001 sq ft / 371.5 sq m
 For identification only - Not to scale



ANNEXE FIRST FLOOR



FIRST FLOOR



ANNEXE GROUND FLOOR / GROUND FLOOR



Isla-Alexander

First Floor, 36 Station Road, Cardiff - CF14 5LT

07817727321

lynne@isla-alexander.com

www.isla-alexander.com