



## Isla-Alexander

10 Orchard Way, Eastchurch - ME12 4DS

07817727321 • [lynne@isla-alexander.com](mailto:lynne@isla-alexander.com) • [www.isla-alexander.com](http://www.isla-alexander.com)



## 6 Hunsdon Close

Eastchurch, Sheerness

A beautiful four bedroom detached family home boasting a substantial corner plot, ample off road parking and double garage, situated in Kingsborough Manor.

Council Tax band: F

Tenure: Freehold

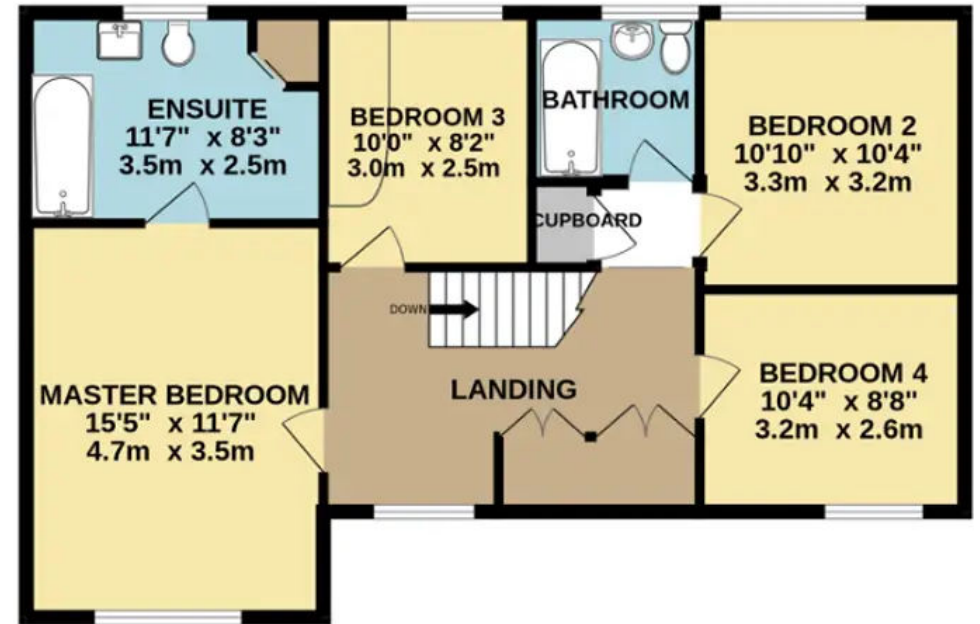
EPC Energy Efficiency Rating: C

EPC Environmental Impact Rating:

- Prestigious Location
- Corner Plot
- Double Garage
- Cloakroom and Utility room
- Family bathroom and en suite
- Open plan living and kitchen space
- Secluded landscaped garden
- Four double bedrooms
- Separate lounge with feature fireplace







FLOOR PLAN MEASUREMENTS ARE FOR ILLUSTRATION PURPOSES ONLY

Whilst every attempt has been made to ensure the accuracy of the floorplan contained here, measurements of doors, windows, rooms and any other items are approximate and no responsibility is taken for any error, omission or mis-statement. This plan is for illustrative purposes only and should be used as such by any prospective purchaser. The services, systems and appliances shown have not been tested and no guarantee as to their operability or efficiency can be given.

Made with Metropix ©2023



## Isla-Alexander

10 Orchard Way, Eastchurch - ME12 4DS

07817727321

[lynne@isla-alexander.com](mailto:lynne@isla-alexander.com)

[www.isla-alexander.com](http://www.isla-alexander.com)